

*Marin Community
Choice Aggregation
Project – Local
Government Task
Force Update*

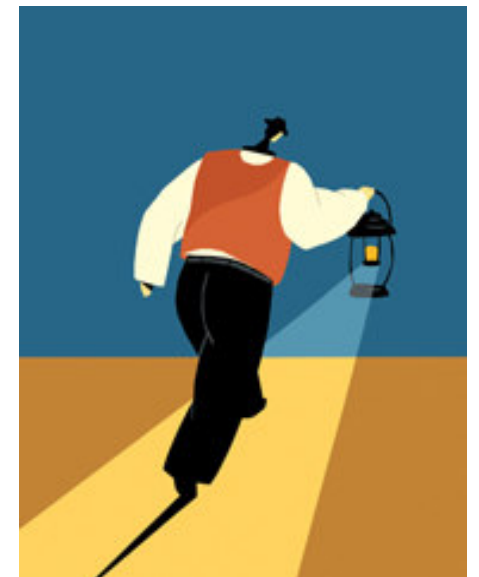
March 6, 2008

Pursuing Community Choice in Marin

Upcoming Schedule

Questions

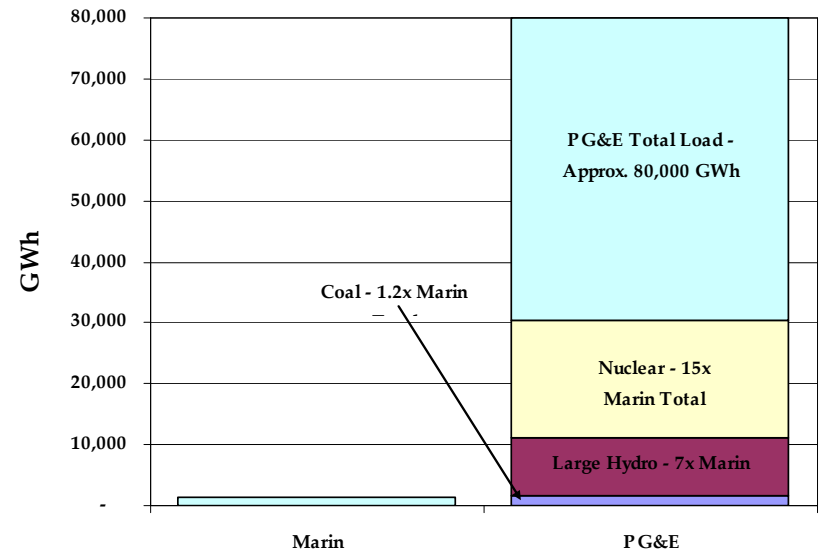
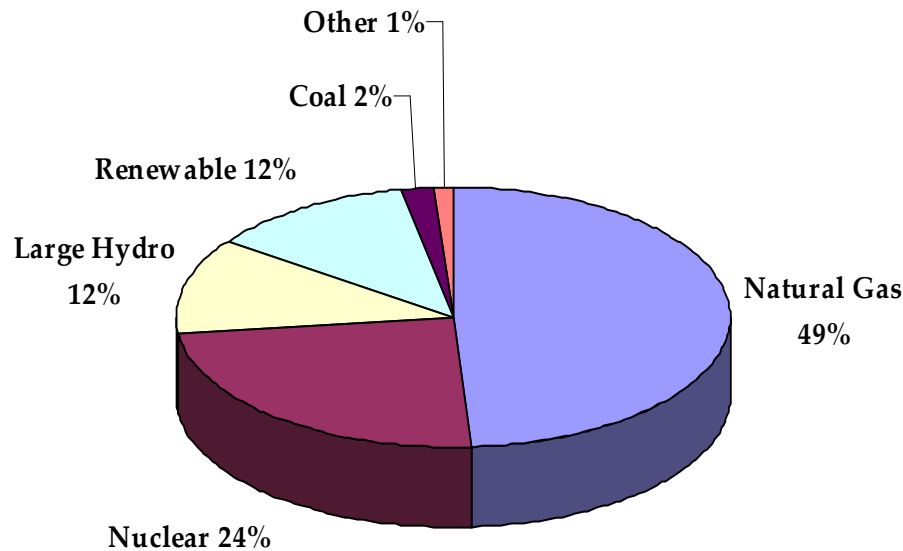
NAVIGANT
CONSULTING



*Pursuing Community Choice in
Marin*

Current Energy Supply in Marin

- **Marin residents and businesses currently have one energy supply option:**
 - PG&E provides all electric generation, transmission and distribution as well as related customers service.
 - PG&E’s power content (February 2008):



Two New Energy Supply Options?

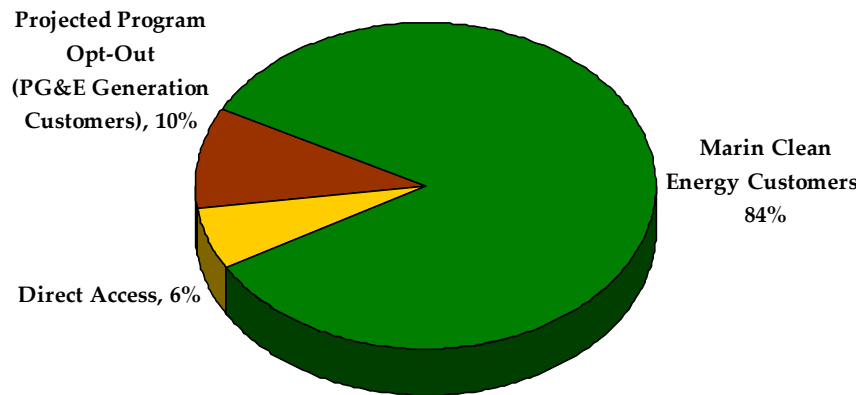
- **The Marin Clean Energy JPA would offer two alternative power supply options:**
 - 100% Green – For customers desiring an uncompromising, entirely renewable power supply at a rate premium reflective of actual power costs (approximately \$8-10/month).
 - Light Green – Highly renewable (over 50% by 2014) power supply at rates that are equivalent to PG&E.
- **Marin residents and businesses have the option of remaining PG&E generation customers and will be provided with “opt-out” notices prior to and following service initiation.**

Clarifying Customer Energy Choices

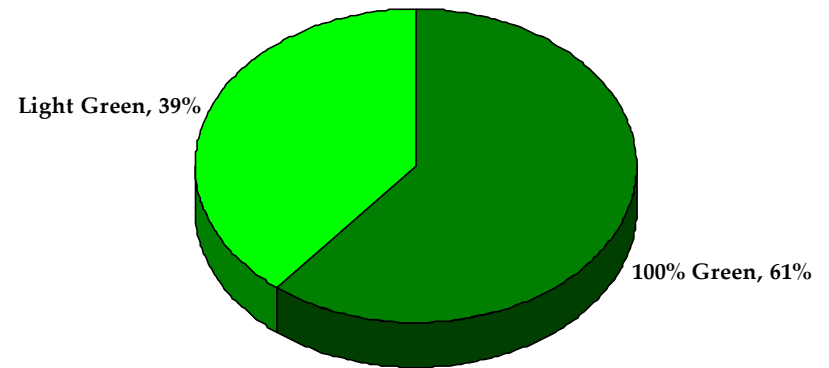
		Marin Clean Energy JPA	
	Status Quo	Light Green	100% Green
Renewable Supply %	12%	25-51%	100%
Rate Impact (\$/Month Increase)	Not Applicable	\$0.00	Approx. \$8.00 - \$10.00 ¹
GHG Reduction	0	10-17%	

¹500 kWh/Month Customer

Projected Electric Customers in Marin

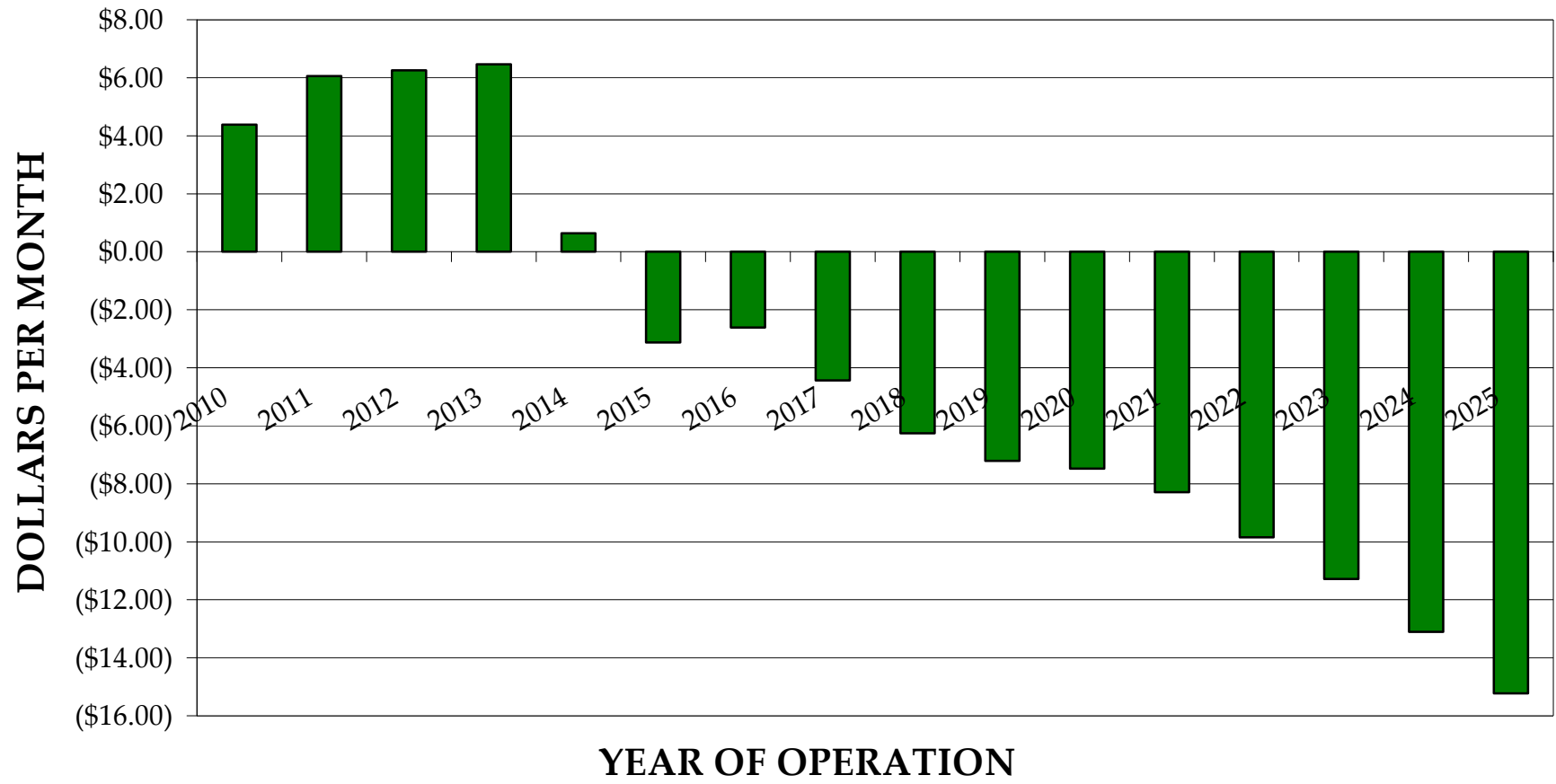


Projected Marin Clean Energy Participation (Detail)



Projected Operations of the Marin Clean Energy JPA

MARIN POWER AUTHORITY AVERAGE PROGRAM PREMIUM (MONTHLY) CUSTOMER USING 500KWh/MONTH



Upcoming Schedule

Updated Timeline for Program Implementation

ACTIVITY	TIMELINE	OFF RAMP?
Complete Business Plan	March 2008	
<i>Task Force Review of Business Plan Complete</i>	<i>March 2008</i>	<i>YES</i>
Begin Developing Draft JPA Agreement	March 2008	
Begin Developing Draft Implementation Plan	March 2008	
<i>City and County Ordinances</i>	<i>April 2008 – November 2008</i>	<i>YES</i>
<i>Approve and Execute JPA Agreement</i>	<i>December 2008</i>	<i>YES</i>
Issue Supplier Request for Bids and Select Seller	+30 Days	
<i>Approve Implementation Plan</i>	<i>+120 Days</i>	<i>YES</i>
<i>Approve Program Agreement 1</i>	<i>+120 Days</i>	<i>YES</i>
File Implementation Plan with CPUC	+120 Days	
<i>Final Go/No Go Decision by the Marin Power Authority</i>	<i>+200 Days</i>	<i>YES</i>
Staffing and Startup Activities	+270 Days	
Execute Supplier/Vendor Contracts	+300 Days	
Go live phase 1	+330 Days	

Questions, Comments & Discussion

Questions?

NCI Contacts



Kirby Dusel | Associate Director
kdusel@navigantconsulting.com
916.834.0684



John Dalessi | Director
jdalessi@navigantconsulting.com
916.631.3200